

Press release

Skin-deep precision: lighting solutions by Zumtobel in edding's first-ever tattoo studio

Precise lighting is required in many working environments. But nowhere else is such (almost) irreversible work carried out than in a tattoo studio. That's why a tattoo studio needs lighting specifically designed for detailed work and the environment in which this is carried out. Established company edding International GmbH has opened its first tattoo studio in Hamburg, entering the tattoo market with its own EU-compliant inks. While for the interior design edding focused on creating a modern, bright atmosphere, for the lighting it relied on Zumtobel's expertise, with the Austrian luminaire manufacturer installing a perfect glare-free lighting solution that mimics daylight almost exactly.

Dornbirn, 18 February 2021 – Light that creates the perfect conditions for detailed work and prevents eye strain: where else if not in a tattoo studio? In Hamburg's Kontorhaus district, near Speicherstadt, edding has opened its tattoo studio in the Chilehaus. The Chilehaus was built in the 1920s and is now part of a UNESCO World Heritage Site. When planning the interior design, edding focused on creating a bright atmosphere that conveys clinical cleanliness and increases customer trust. "As soon as you enter our tattoo studio, you can see that clear lines meet traditional details. It's our way of showing how well edding can combine safe tattooing with creative tattoo art," says Sebastian Knebelkamp, project manager at edding. The reason behind the opening of the tattoo studio is the fact that five years ago, edding, a manufacturer of felt and fibre tip pens, began looking into developing their own tattoo inks. The composition of the edding tattoo inks is truly innovative: they are vegan, made in Germany in accordance with a certified quality management system and are free from many of the additives previously used in conventional tattoo inks.

Service and safety

The studio is divided into different areas. As well as the reception and a shop, there is also a lounge area where customers can discuss their ideas for their tattoo. The Clean Tattoo area, well separated from the lounge area, has been designed with lots of glass and light. Customers are tattooed in three separate Tattoo Spots. Glare-free lighting is particularly important in these rooms. "We wanted the lighting both to enhance the clear, simple interior design and to meet our tattoo artists' needs," says Knebelkamp. "For tattooing, I need lighting that provides bright, precise light, so that my eyes don't get tired too quickly, especially for detailed tattoos. But I don't want to be blinded by it either," explains Alex Beju, a tattoo artist at the edding studio.

Lighting solutions for undistorted vision

That's why edding chose [LIGHT FIELDS III](#), designed by [Studio Ambrozus](#), for the rooms in which customers are tattooed and where care and precision are top priority. The minimalist luminaire offers uncompromising light quality that's perfect for performing demanding visual tasks. It provides an optimal balance between diffused and directional light to ensure high-contrast vision without multiple shadows or glare. Powerful light for detailed, precision work. Its frameless body lends the luminaire a certain elegance. It blends discreetly into the architecture. The multi-layer micro-pyramidal optic MPO+ refracts and guides the light in a controlled manner, with pleasant distribution even at extreme beam angles. This allows for flexible positioning of the luminaire and offers precise, dimmable light from any angle, with glare reduced to a minimum.

Consistent clarity of design

In the entrance and lounge area, Zumtobel spotlights were installed on a track. The uniform, discreet shape of these versatile lighting tools and their clear, focussed style helps create lighting solutions with a consistent design. The built-in control gear elements mean the luminaires can be used anywhere. LED modules and reflectors are simply selected from the kit depending on the light properties required. In addition, the possibility of adapting lighting angles and luminous flux enables maximum flexibility, along with excellent efficiency, glare control and colour rendering.

Architectural flexibility

[PANOS evolution](#) and [infinity](#) are used in the office and communal areas of the edding tattoo studio, where they perform different lighting tasks while providing homogeneous illumination. The recessed luminaire [CARDAN evolution](#) combines maximum flexibility with discreet design, setting new standards in gimbal accent lighting. Unlike conventional gimbal solutions, CARDAN evolution is prevented from illuminating itself. Combined with the closed design, this results in a significantly calmer ceiling aesthetic and higher efficiency. The solution has been installed in the preparation, wash and disinfection rooms.

Captions:

(Photo credits: Zumtobel)



Image 1: In no other working environment is such (almost) irreversible work carried out than in a tattoo studio. That's why a tattoo studio needs a lighting system with minimum glare and bright, precise light, to ensure that tattooists' eyes don't tire too quickly, especially when working on detailed tattoos.

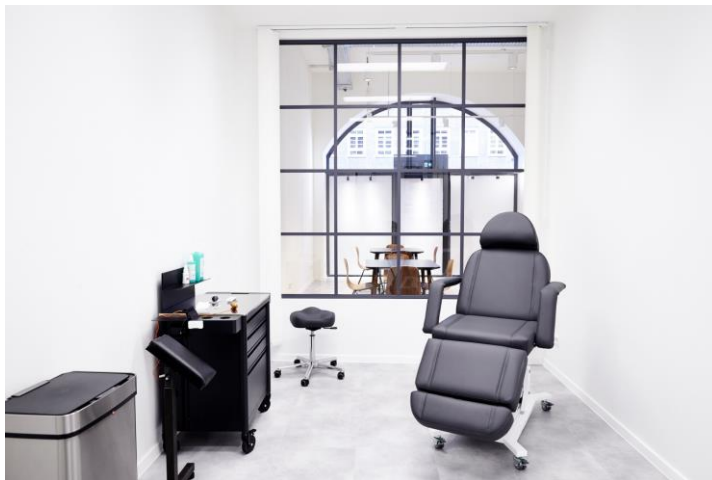


Image 2: LIGHT FIELDS III has been installed in areas where care and precision are top priority. The minimalist luminaire offers uncompromising light quality that's perfect for performing demanding visual tasks, while glare is reduced to a minimum.

Photo credits: edding



Image 3: When designing the rooms, edding focussed on creating a modern, bright atmosphere. In the lounge area and consultation corner, Zumtobel spotlights were installed on a track. Photo credits: edding

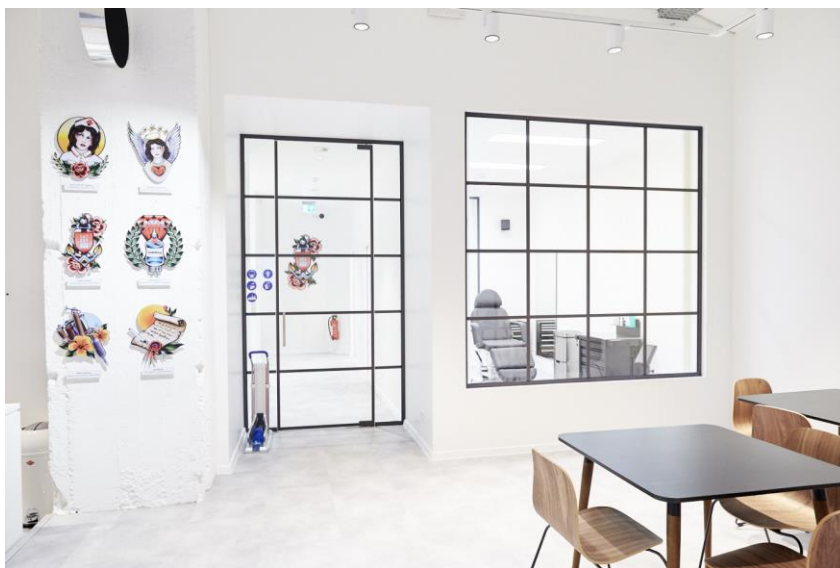


Image 4: The clean tattoo area, well separated from the lounge area, has been designed with lots of glass and light. Photo credits: edding

Press contact:

haebmau.
Daniela Beron
Franz-Joseph-Straße 1
80801 Munich

Tel.: +49 89 381 08 157
daniela.beron@haebmau.de

ZG Licht Süd GmbH
Verena Heidsiek-Schmitt
Lead Management Marketing Germany
Landsberger Str. 404
80687 Munich

Tel.: +49 175 523 2108
Verena.Heidsiek-Schmitt@zumtobelgroup.com
www.zumtobel.com

haebmau.
Lena Rattay
Franz-Joseph-Straße 1
80801 Munich

Tel.: +49 89 381 08 200
lena.rattay@haebmau.de

ZG Lighting Austria GmbH
Gudrun Schach
Marketing & Communications Manager Austria
Wagramer Strasse 19
1220 Vienna

Tel.: +43 664 80892 4030
Gudrun.Schach@zumtobelgroup.com
www.zumtobel.com

Sales for Germany, Austria, Switzerland:

ZG Licht Süd GmbH
Advice Centre Frankfurt
Carl-Benz-Straße 21
60386 Frankfurt / Mannheim

Tel.: +49 69 26 48 89 0
Fax: +49 69 69 26 48 89 80
info.de@zumtobelgroup.com
www.zumtobel.de

ZG Lighting Austria GmbH
Advice Centre Vienna, Lower Austria,
Burgenland
Wagramer Straße 19
A-1220 Vienna

Tel.: +43 1 258 2601 0
Fax: +43 1 258 2601 82845
info.at@zumtobelgroup.com
www.zumtobel.at

Zumtobel Licht AG
Thurgauerstrasse 39
CH-8050 Zurich

Tel.: +41 44 305 35 35
Fax: +41 44 305 35 36
info.ch@zumtobelgroup.com
www.zumtobel.ch

About Zumtobel

Our passion is to create quality lighting solutions that deliver total perfection. We are driven by a conviction that the right kind of light can create the right atmosphere in a building at any time of day or night. When tailored to people's individual needs, light becomes something of an experience. We are always exploring new ways to come up with inimitable and timeless designs and are inspired by a unique creative ambition. When working on the lighting of tomorrow, we are driven by our innovative corporate philosophy of continuously improving the aesthetics of light. With passion, a sense of beauty and a forward-looking approach, we are constantly seeking to use light to help improve people's quality of life. The Zumtobel brand is part of Zumtobel Group AG, based in Dornbirn in the Vorarlberg region of Austria.

Zumtobel. The Light.